

Alcohol, health and taxes

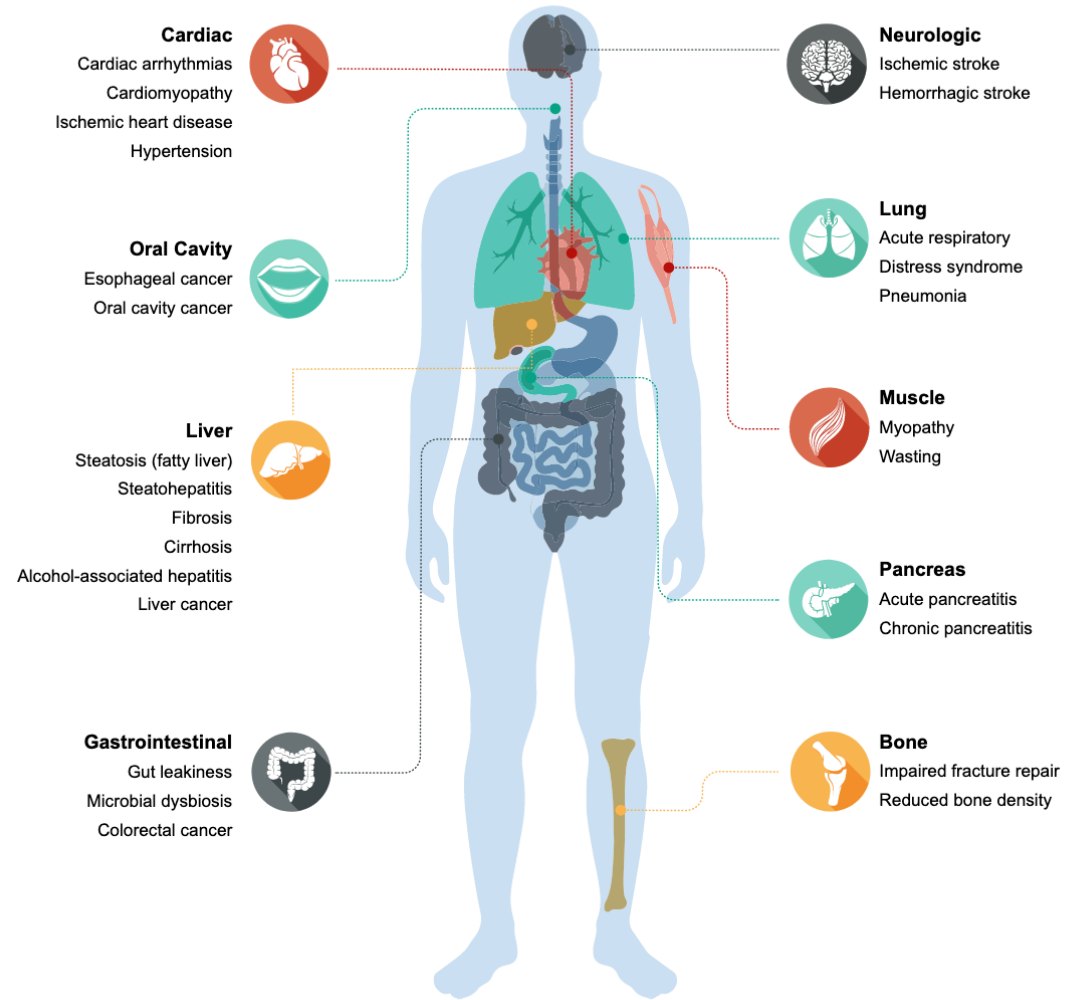
David H. Jernigan PhD
Department of Health Law, Policy and Management
Boston University School of Public Health

The overview

- The latest data from the World Health Organization (WHO) indicate that:
 - Alcohol is causally related to more than 200 disease and injury conditions in the human body
 - Alcohol is responsible for approximately 2.6 million deaths per year
 - The relationship between alcohol and harm is paradoxical:
 - Alcohol harms are greatest in higher-income countries, communities and families, where consumption tends to be higher
 - Harms per liter consumed are highest in lower-income countries, communities and families

Alcohol's harms in the human body

Alcohol-Associated Organ Damage



Immune Dysregulation

CANCERS

Liver Colon Breast Oral cavity Rectum

Harms 100% attributable to alcohol use (ICD10 codes - CDC)

- Alcohol abuse
- Alcohol cardiomyopathy
- Alcohol dependence syndrome
- Alcohol polyneuropathy
- Alcoholic gastritis
- Alcoholic liver disease
- Alcoholic myopathy
- Alcoholic psychosis
- Alcohol poisoning
- Suicide by and exposure to alcohol
- Alcohol-induced acute pancreatitis
- Alcohol-induced chronic pancreatitis
- Degeneration of nervous system due to alcohol
- Fetal alcohol syndrome
- Fetus and newborn affected by maternal use of alcohol

Selected harms partially attributable to alcohol use

Chronic

- Cancers: female breast, colorectal, esophageal, laryngeal, liver, oral cavity and pharyngeal, pancreatic, prostate (males only), stomach
- Heart disease and stroke: CHD, hypertension, hemorrhagic and ischaemic stroke
- Esophageal varices
- Liver cirrhosis (unspecified)
- Chronic hepatitis
- Infant deaths from low birthweight, pre-term birth, or small for gestational age

Acute (only AAFs >20%)

- Motor vehicle crashes
- Poisoning (not alcohol)
- Suicide
- Aspiration
- Drowning
- Fall injuries
- Fire injuries
- Firearm injuries
- Homicide
- Hypothermia
- Motor vehicle non-traffic crashes
- Water transport

NM Average Annual Death and Disability from Alcohol Use, 2020-21

2,095 deaths per year 

Alcoholic Liver Disease



544

Alcohol abuse



290

Poisonings

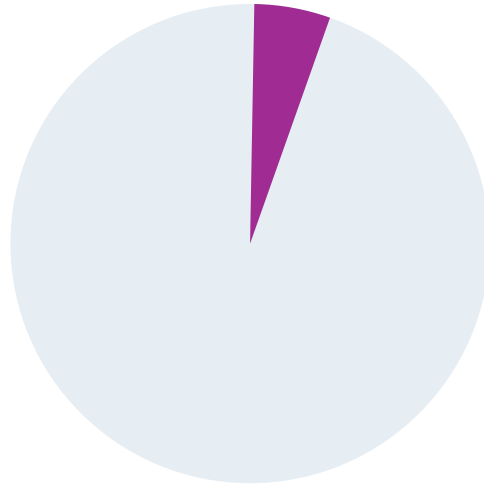


275

Liver Cirrhosis (unspecified)



175



5.5% of all deaths in NM
59,148 years of potential life lost per year

Motor Vehicle Crashes



172

Cancers



118

Suicide



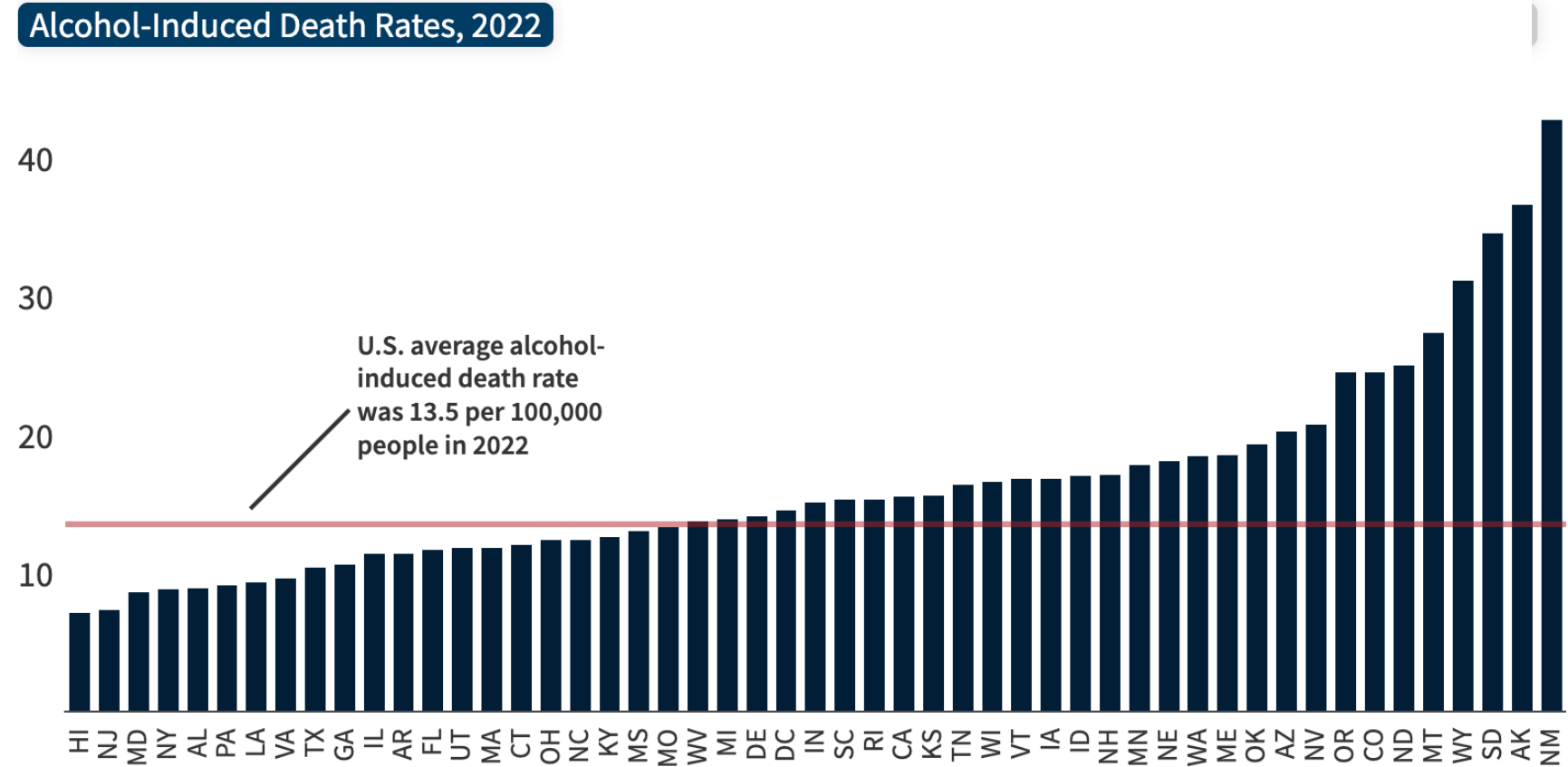
108



New Mexico Alcohol Statistics

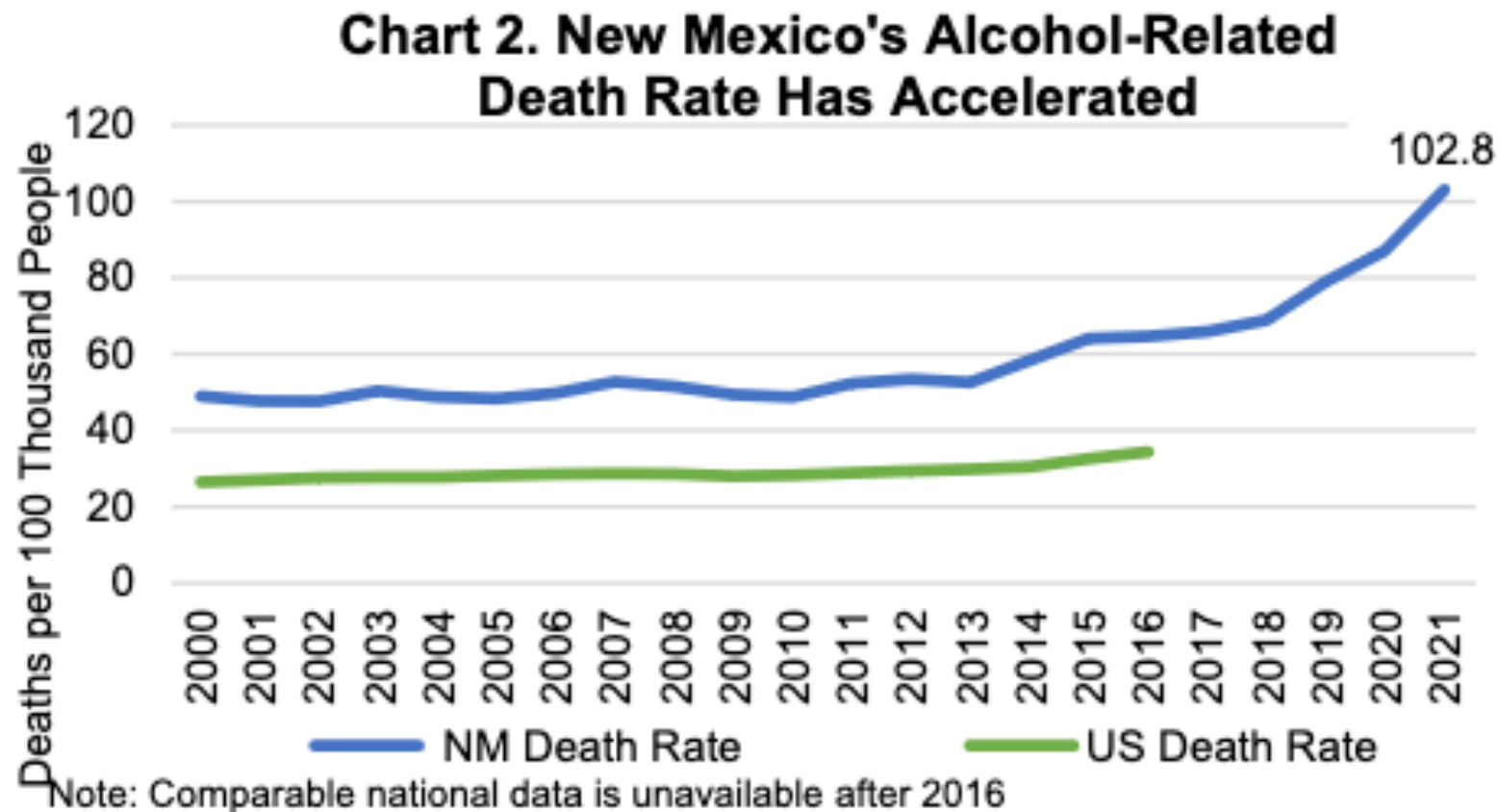
- New Mexico leads the nation in alcohol-induced deaths per 100,000 people.
- Alcohol-induced deaths are those caused by conditions directly due to excessive alcohol use (100% alcohol-attributable).

Alcohol-induced death rates per 100,000 people, 2022



New Mexico Alcohol Statistics

- According to the Program Evaluation Unit of the Legislative Finance Committee, there were 2,274 total alcohol-related deaths in New Mexico in 2021.
- The state's alcohol-related death rate increased by 31 percent from 2019 to 2021.



Source: DOH IBIS